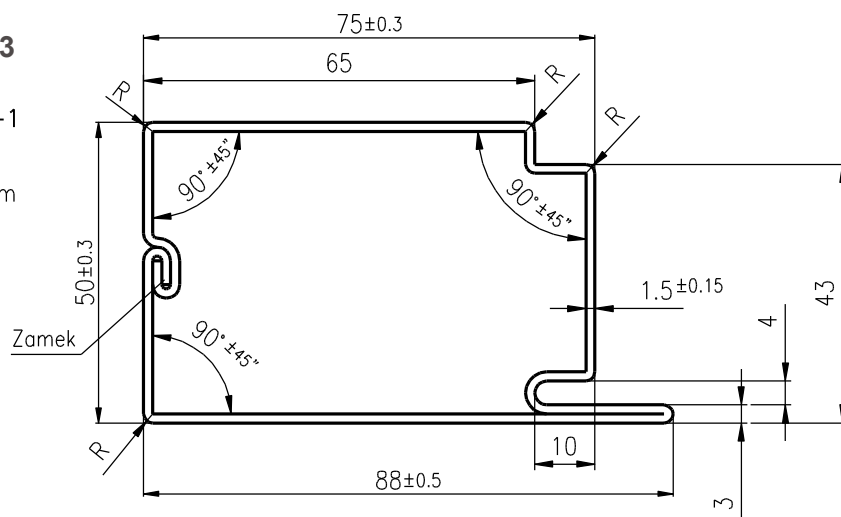


### PROFIL ZZu-3

Gatunek stali: S235JRG2 wg PN-EN 10025-1

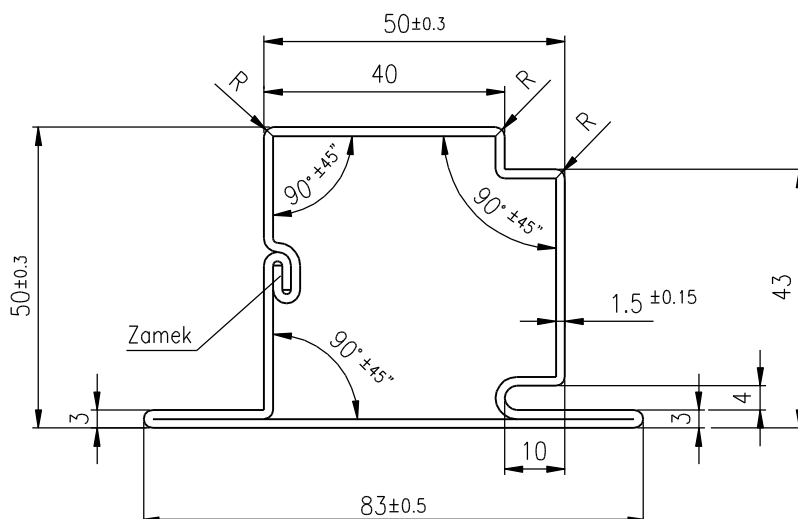
$R_{max} = 3.5\text{mm}$



### PROFIL ZZu-2

Gatunek stali: S235JRG2 wg PN-EN 10025-1

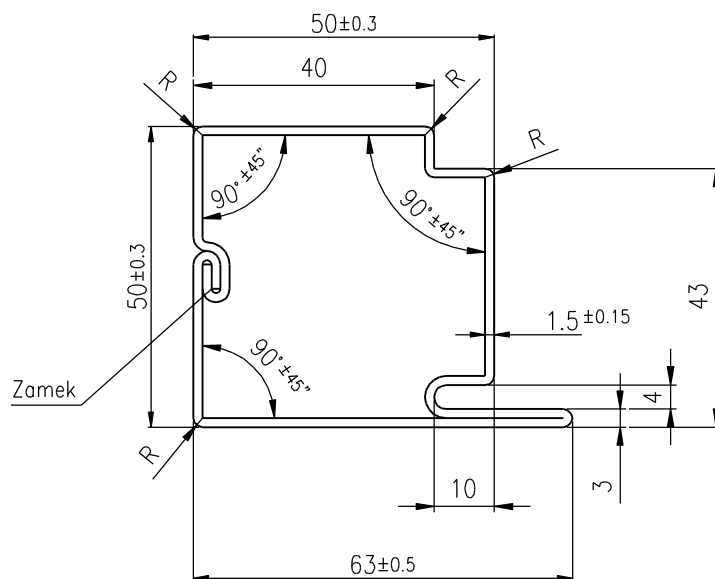
$R_{max} = 3.5\text{mm}$



### PROFIL ZZu-1

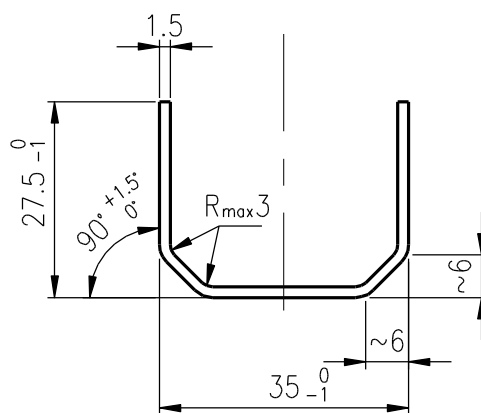
Gatunek stali: S235JRG2 wg PN-EN 10025-1

$R_{max} = 3.5\text{mm}$



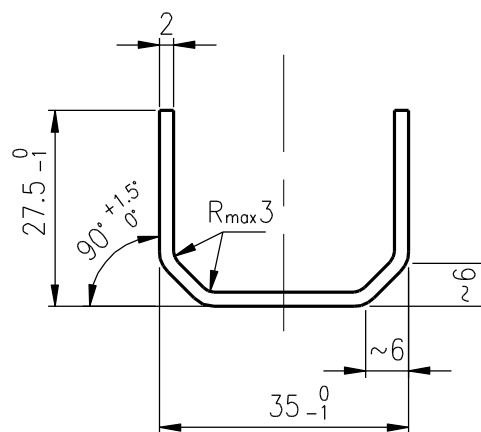
KSZTAŁTOWNIK CEOWY  
35x27,5x6x1,5[mm]

Masa 1m - 0,91kg



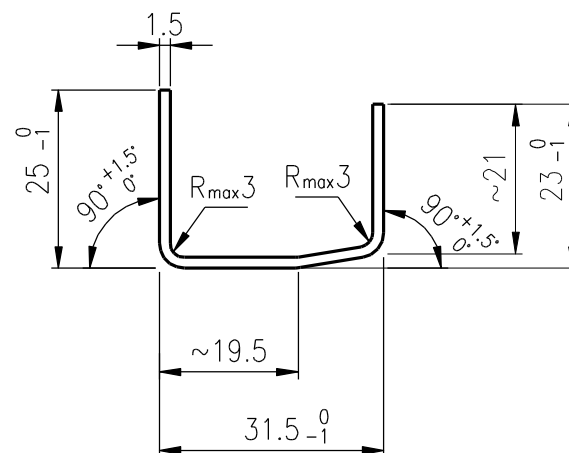
KSZTAŁTOWNIK CEOWY  
35x27,5x6x2[mm]

Masa 1m - 1,20kg



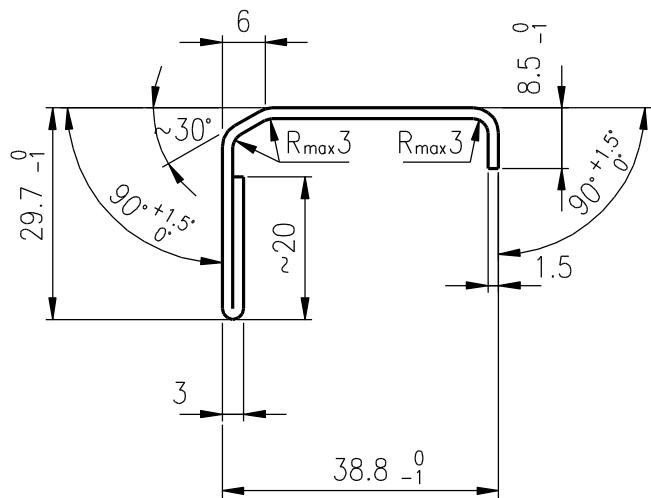
KSZTAŁTOWNIK CEOWY  
31,5x25x23x1,5[mm]

Masa 1m - 0,84kg



KSZTAŁTOWNIK VEKA 292  
38,8x29,7x8,5x1,5[mm]

Masa 1m - 1,03[kg]



KSZTAŁTOWNIK VEKA 293  
45,1x29,7x8,5x1,5[mm]

Masa 1m - 1,07[kg]

